



Internet Restriction Tool

Manage Your Users Internet Access

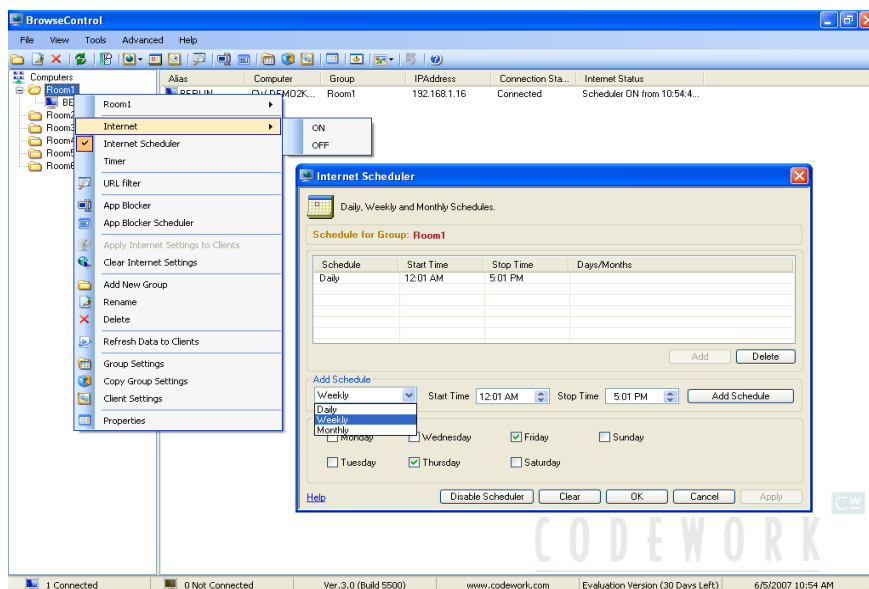
BrowseControl is an **easy-to-use** Internet management tool for controlling the Internet access of your employees or students.

BrowseControl will deny total access to the Internet, allow access to only specific sites (**Allowed List**) or deny access to unauthorized sites (**Blocked List**).

Users can also be restricted access to **Email, FTP sites, Instant Messaging program and more**. Through the **App Blocker** feature, users can also be restricted from running prohibited applications such as chat programs, games and unproductive software.

BrowseControl Features

- ❖ **Deny** access to any websites on the Internet
- ❖ **Allowed List** – allow access to specific websites
- ❖ **Blocked List** – deny access to specific websites
- ❖ **App Blocker** – restrict use of specific Windows applications such as MSN, solitaire and many more.
- ❖ **Multiple Consoles** – Manage your users from different locations
- ❖ Manage policies by Windows users or by computer.
- ❖ Integration with Active Directory.
- ❖ **Schedule** times during the day when Internet is enabled
- ❖ Block **floppy drive, CD drives and USB drive**
- ❖ Block **keyboard input and mouse input and blank screen**
- ❖ **Shut down** or **reboot** computers remotely



BrowseControl Console

What you can do with BrowseControl

Disable or Filter Internet Access

- ✓ Totally block Internet access to individual clients or to a group.
- ✓ Allow users access to authorized sites only through the **Allowed List**.
- ✓ Allow users access to the Internet but block access to sites in the **Blocked List**.

User or PC based Management Permissions for Internet access and other functionalities can be assigned by User or by PC.

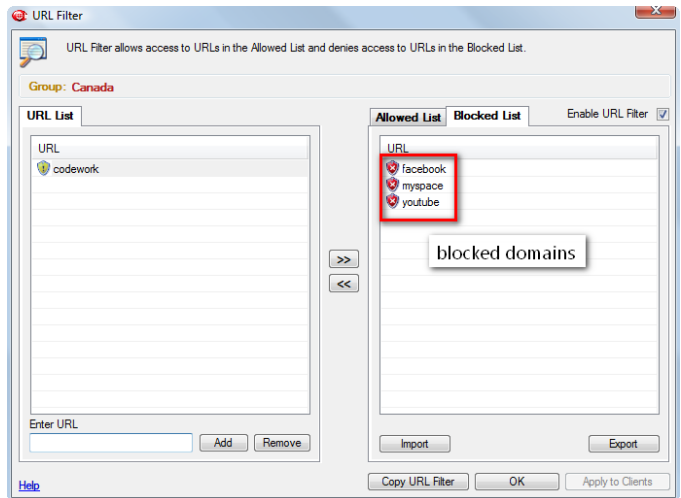
Active Directory Integration In User mode, individual users can be imported directly from Active Directory.

Remote Installation of Clients BrowseControl Clients can be pushed out remotely from the Console, thereby eliminating the need to visit individual client PCs.

Scheduler: Schedules can be created to allow Internet access at specific times only. For example, allow access to the Internet at lunch time only.

Application Blocking: Application Blocking will prevent a user from activating specific applications that the administrator has specified in the App Blocker utility.

Block Users from Downloading specific files: Block the downloading of unauthorized files such as video files etc..



Deny access to unproductive websites

Power Management: Remotely shut down or reboot client systems.

Block CD/Floppy Drives: Block CD/Floppy Drives remotely to prevent unauthorized access from external devices.

Lock Screen, Mouse and Keyboard: Get the attention of your class or employees by locking their screen, keyboard and mouse

Admin Users: Prevents admin users from stopping the BrowseControl client service.

Supported Operating Systems

BrowseControl Server/Console:

Windows 2000/2003, XP and Vista

BrowseControl Client:

Windows 2000/2003, XP and Vista

Contact us at info@currentware.com or the following locations:

UK/Europe

Codework Limited

Lansdowne House,
85 Buxton Road,
Stockport, SK2 6LR

Tel: +44-(0)161-474-0444

Fax: +44-(0)161-474-0787

USA

Currentware

(a division of Codework Inc)

1623, Military Rd #556,

Niagara Falls, NY

14304-1745, USA

Tel: 905-278-8278

Fax: 905-278-0645

Canada

Currentware

(a division of Codework Inc)

126 Windance Cres.

Kanata, ON K2W 0A7

Tel: 905-278-8278

Fax: 866-929-9808

Asia

Codework Inc

Infopark, Thapasya, Kakkanad
Kochi – 682030

India

Tel: +91 484 2415055

+91 484 4055678

Fax: +91 484 4061003